

# SWECHA LEARNING CENTER (SLC) MANIFESTO



- KNOWLEDGE COMMONS -
- SOCIAL IMPACT -
- EQUITABLE TECH-

## What is a Swecha Learning Center?

It is a community of students, academicians who explore, learn and work with various Free and open-source software technologies and open hardware to solve social problems while enhancing their skills parallelly.

**A place to  
Learn, Explore and Share!!**

## Why should one join an SLC?

- To explore, experiment, advocate various Free & Open Source Software and Hardware technologies.
- To broaden one's scope of the latest trends in the industry by working with developers and research scholars.
- To Bridge the digital divide through extension and outreach activity.
- To contribute and solve real-world problems through technology and social activity.
- To grow as a team player alongside honing one's technical and interpersonal skills.

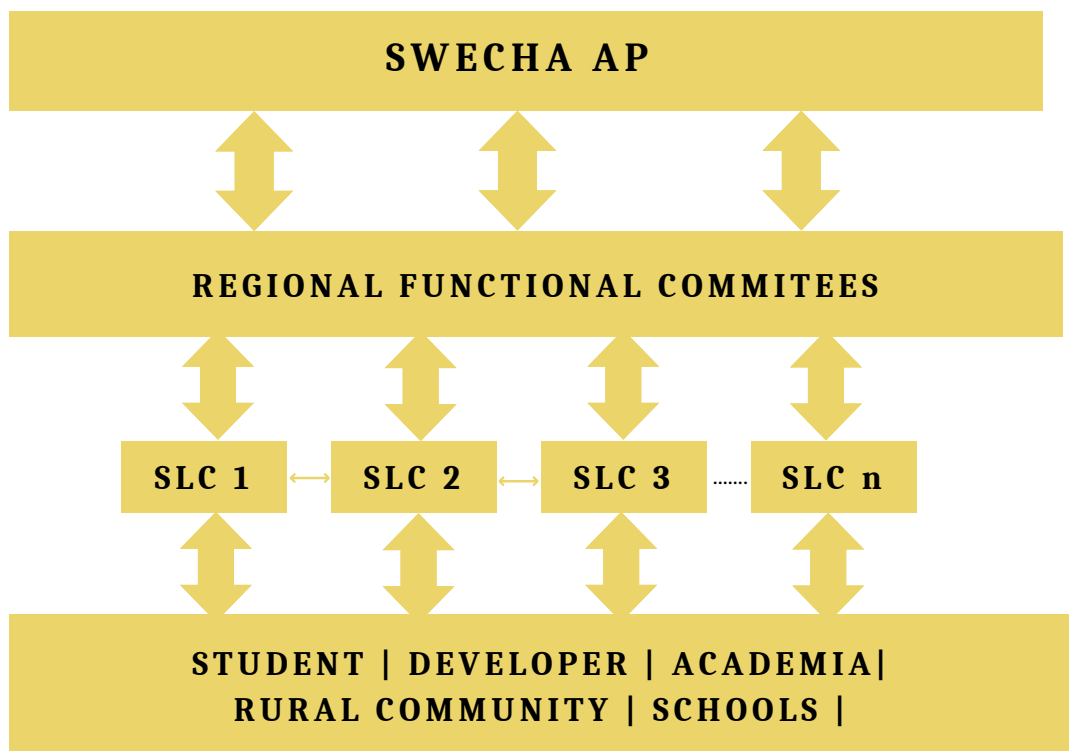
## Who can Join a SLC??

- **ANYONE interested**
  - in learning, exploring and sharing cutting-edge technologies that are free and open source.
  - to volunteer, organize and contribute to socially relevant activities.

## SLC'S We have in Andhra Pradesh

KLU GLUG	PSCMR SLC	LBRCE SLC	NIT SLC
SRKREC SLC	NEC Nellore SLC	NEC Gudur SLC	
MVGR SLC	VIZB SLC	JNTUK-GV SLC	CIET SLC

## Composition of Swecha AP



## Structure of an SLC:

- An SLC Functional Team needs to be established that constitutes volunteers in accordance with the Regional Functional Committee norms.
- The members of the SLC include students, academicians and Functional Committee Members.
- All the events organized in the SLC need to be in alignment with the principles and philosophy of Swecha AP.
- Every SLC is required to form the internal teams primarily,
  - Tech Team
  - Social Outreach Team
  - Design Team
  - Social Media and Campaign Team
  - Organizing/LogisticsTeam

## Requirements for an SLC:

- An official Logo
- A Faculty in charge to coordinate SLC Hub and its activities
- A Space designated for SLC on the campus

### **Infrastructure Required:**

- Desktop Computers with Internet Facility
- Hardware Prototyping Boards and Equipment
- Modular Chairs and Tables like an Open Office Environment
- Stationary for Prototyping and Presentations

### **Operational Requirements:**

- Lab(s) and Seminar Hall(s) to conduct training programs and events
- Travel, Boarding & Food Provision for Swecha Resource Persons & Organizers
- Honorarium to speakers during talks or workshops

## What do we do at SLC?

### • **Technology**

- **Hands-on Sessions** on emerging Free Software technologies /Hackathons/ Bootcamps/Sprints/Tech Projects
- It includes **community project development** to solve social problems such as
  - Freedom Box**: A low-cost community Wi-Fi Network for rural India.
  - Balaswecha**: An operating system for school students that has been used by students of many government schools across Telangana and Andhra Pradesh.
- Participations in **FOSS Internships** like GSOC, Outreachy etc., to understand the philosophy of Free Software and it's contributions towards society.

### • **Social Outreach**

- Technology Transfer and Digital learning initiatives in Government Schools and Rural Spaces.



Sessions on FOSS  
Technology



Mentor Driven &  
Peer Learning



Socially Relevant  
Projects



Gather For a Work at  
SLC irrespective of  
Dept & Year



Literary & Cultural  
Activities



Design Thinking and  
Agile Methodologies



# SLC ANNUAL CALENDAR



## SLC TEAM HAVE TO ORGANIZE THE FOLLOWING ACTIVITIES

### SLC EVENTS

- Weekly or Fortnightly TechDays
- Boot Camp (Technology/Tech for Society)
- Academic Intervention (Socially Relevant Projects/Community Projects/Academic Projects)
- Developer Sprints (2-3 Week with Project)
- Hackathon
- Freedom Fest (Workshops, Talks, Expo & Technical and Literary Events)

### SOCIAL OUTREACH ACTIVITIES

**SLC have to adopt a ZPHS School(Preferred) and run the following activities**

- **Balaswecha**
  - Bridging the Digital Divide
  - Courses like Scratch, HTML, Python, Arduino etc
- **Be A Maker**
  - Bringing Ideas into Reality through Design Thinking
  - Hardware and Software Prototyping with Arduino, Electronics etc

### GENERAL EVENTS

- International Telugu Language Day (Localization) - 21 February
- National Science Day - 28 February
- International Working Women's Day - 8 March
- Arduino Day
- Martyr's Day
- Scientific Temper Day - 20 August
- Engineer's Day - 15 September
- Aaron Swartz Day - 9 November
- Hardware Freedom Day
- Software Freedom Day

### **REACH US:**

[contactus@swechaap.org](mailto:contactus@swechaap.org) | 9505562303

# Learning Center

I LEARN, SHARE & EXPLORE I

*Follow us @SwechaAP*

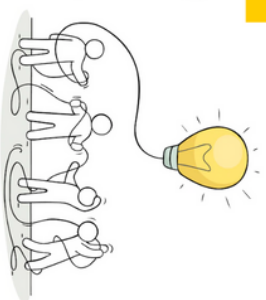
## What is a Swecha Learning Center?

It is primarily a group of like minded students and faculty, all wanting to work on and learn various Free Software Technologies, thereby enhancing their skills, be it technical, communication, leadership or management. It acts as a platform for the students to Experiment, Learn and Share!

## Why to join a SLC?

### 1. Enhanced & Faster learning curve

Just imagine a single person trying to learn by himself? It takes him Quite long for him to learn, isn't it? While, being part of a GLUG would bring you closer to like minded people, all of whom would be Free Software is a matter of liberty, not price the latest researches being conducted in the academic centers or of the developments in the industry straight from the horses mouths!



### 2. Interaction with eminent

professors, experts from industry and geeks from various parts of

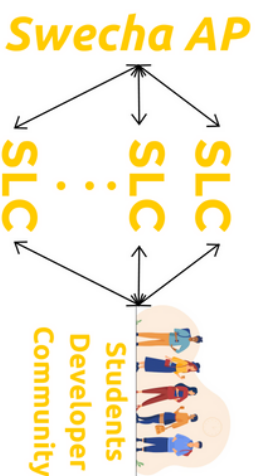
### India

There is a large community out with millions of developers working on Free software who are ready to lend thier helping hand.



### 3. Team work & Personalaity Development

You get to work in teams of varying sizes with varying objectives. For instance, being a team member in your GLUG would give you the opportunity to work in a team of, say 20 members, with specific objectives.



## SLCs in our state

+ JNTU-GV SLC, VZM Dt. + SRKREC SLC, WG Dt.  
+ MVGR SLC, VZM Dt. + PSCMR SLC, NTR Dt.  
+ VIZB SLC, VSKP Dt. + PVPST SLC, NTR Dt.  
+ KLU SLC, GNT Dt. + NIT SLC, PALND Dt.  
+ LBRCE SLC, NTR Dt. + CIET SLC, GNT Dt.

## What we do at a SLC ?

### Sessions on FOS Technology

Hands-on Sessions on emerging Free Software technologies/Hackthons/

### Socially Relevant Projects

Using Technology for solving problems in society

### Social Outreach

Technolgy Transfer and Digital learning initiatives in Government Schools, Rural Spaces

### Literary & Cultural Activities

It help students overcome stage fear to some extent, it is predominantly the cultural events that givea student the required confidence to face a crowd.



**There is no limit for learning and no boundary**

**For an SLC activity**

If you are creative enough to spread the word and work for the ideology you believe, then you can plan any kind of activity at an SLC.

**Come & Join, Learn & Share**

Irrespective of Domain, Department, Knowledge Base, Beginners, Geeks etc. If you are interested in organizing and contributing social outreach activity

## How to organize SLC?

An SLC is organized by a team of enthusiastic students and faculty at a college with the contionous connect & support of Swecha AP Resource Persons.

## Who can join a SLC?

Anyone who is interested in using, learning, sharing and contributing to free software are eligible.

### Mentor Driven & Peer Learning

Project mentoring by Your Faculty, Senior, Junior & a Swecha Team(SLC) working in any IT industry or College.

### Gather and Work at SLC

SLC has an office which is open almost till late nights and even on Sundays.

### Promotes Free Software

If you would want to help your friends out, in some way or the other? Free Software teaches you to help in better way.

### Peer Learning & Agile

We adopt and practice peer-peer learning methadology for effective and progressive learning.